



## SquirrelGard™ Repairs and Protects Lead Jack Flashings

With SquirrelGard™, squirrel damaged plumbing vent flashing replacement is not required. SquirrelGard™ can be installed directly over damaged lead jack flashings providing a waterproof vent without replacing the lead jack flashing or any of the surrounding shingles. No unsightly mis-matched shingle repairs!

SquirrelGard™ can also be used on newly installed roofs to prevent squirrel damage to lead jack flashings.



U.S. Patent Pending



# SquirrelGard™ Features

- Damaged Lead Jack flashing replacement is NOT required.
- Shingle replacement is NOT required.
- Star cap prevents rain water from entering the plumbing vent and therefore entering the waste water (or septic) system – estimated to as much as 10 gallons of water per vent per year!
- Interior screen or mesh material allows the free upward escape of sewer gas.
- Interior screen or mesh material prevents rodents, birds and other critters from entering into the vent stack.
- Prevents debris from entering plumbing vents.
- Allows access to plumbing vents to repair clogged drains.
- Fits any roof pitch.
- Ready to paint to match your roof system color.
- Multiple sizes to fit all standard plumbing vents.
- Custom sizes available.

## Environmentally Friendly Product!

Durable, long-lasting and re-usable on multiple roof replacements.  
Eliminates rainwater from entering waste water treatment facilities.  
Saves lead jack flashings from Squirrel damage, reducing waste.

SquirrelGard™ is a protective device for a plumbing vent stack with a lead jack flashing. The lead jack flashing is a weatherproofing cover formed substantially of a lead material permanently secured over the plumbing vent stack. SquirrelGard™ completely covers the exposed surface of the lead jack flashing to prevent chewing, teeth sharpening/filing, and damage to the waterproofing qualities of the lead jack by squirrels. A separate wire screen (hardware cloth) covers the base of the lead jack to prevent damage from squirrels to the base of the lead jack flashing. SquirrelGard™ is most suitable as a repair method, as it can be installed over an already damaged lead jack flashing and not require replacement of the lead jack, or violation (removal and replacement) of the surrounding existing roofing shingles. The product is designed for ease of installation by a homeowner or handyman without any technical roofing training. SquirrelGard™ is easily placed over the lead jack flashing and provides not only a water proof vent, but also continuous protection from squirrels that need to file their teeth.

SquirrelGard™ features a four-sided star cap on the top of the cylindrical sleeve that provides the waterproofing mechanism for a damaged lead jack flashing when utilized in a repair situation.

The upper end of SquirrelGard™'s protective sleeve includes an end piece having a screen to allow free upward escape of sewer gas and to prevent, rodents, rats, and other critters such as roaches, birds and snakes from entering the vent stack itself. Routinely, such unwanted critters manage to climb down the vent stack, through the sewer trap and into the dwelling through a toilet, sink or drain area. Nests and dead animals trapped in the vent will also cause obvious plumbing problems. The cover also prevents pollen and leaves from entering the vent stack.

SquirrelGard™ can be easily removed by a plumbing contractor in the event of a drain clog or backup to access the plumbing vent with a clean-out apparatus.

SquirrelGard™ features a slanted /angular bottom on the cylindrical sleeve to facilitate a roof slope. As SquirrelGard™ does not require an exact fit at the bottom of the flashing, the angle is based on a 6/12 pitch and can facilitate all roof pitches. The bottom of SquirrelGard™ has an epoxy/rubber seal to provide a soft sealing connection and not damage the soft lead jack flashing flange when in contact.

SquirrelGard™ is available in cylindrical widths to facilitate the various sizes of currently installed lead jack flashings used on the various sizes of plumbing vents.

SquirrelGard™ is made of a 26-gauge steel with a paint grip finish. The material is not subject to damage from squirrels sharpening/filing their teeth. The finish provides for painting to match the color of roofing shingle.

Approximately 10 gallons of rain water per year enters each plumbing vent stack adding substantially to the needs of the waste water treatment facilities of municipalities. SquirrelGard™ will prevent rain water from entering the plumbing vent and therefore entering the waste water (or septic) system.

SquirrelGard™ protects plumbing vents/lead jack flashings on the roof from the effects of snow and ice by providing an insulative air space surrounding the vents.



SquirrelGard™ Installed on roof.



Typical repair for Squirrel Damaged Vents.



Squirrel Damaged Lead Jack Plumbing Vent.



# Easy Installation Guide



**SquirrelGard™ Tip for Best Results:**  
Paint the SquirrelGard™ and Base Screen to match/blend with the roofing system before installing.  
Allow to dry as necessary.

## LADDER SAFETY

Always be sure that you practice all necessary safety precautions when accessing your roof. Always be sure your ladder is secure before ascending to your roof. For more details on ladder safety, go to the Occupational Safety and Hazard Administration (OSHA) website at <http://www.osha.gov/SLTC/etools/construction/falls/4ladders.html>

### Tools and Supplies Needed:

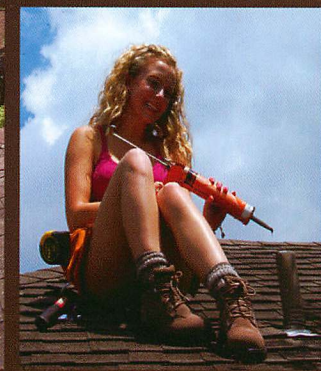
- Hammer
- Polyurethane Sealant (caulk)
- Caulk Gun
- Wire Snips
- Spray paint to match the color of the shingles



SquirrelGard™ may not provide a waterproof flashing repair.

Excellent example of a lead jack flashing that can be protected by SquirrelGard™.

- 1 Inspect Lead Jack Flashing prior to installation to ensure that there is no damage to the base of the lead jack that would allow water to enter the roofing system.



2

Slide the SquirrelGard™ over the lead jack flashing to confirm proper fit. The SquirrelGard™ should fit securely to the base. If it does not fit properly, remove the SquirrelGard™ and hammer to gently reshape the lead jack in order to ensure a proper fit. Remove the SquirrelGard™ from the vent before proceeding to Step 3.

3

Install the Base Screen around the base of the vent and lead jack flashing. Open the pre-cut center opening of the Base Screen and slide over the vent. (Excess screen can be trimmed with wire snips to cover only the exposed base of the lead jack flashing.)

4

Apply a bead of caulk down the side of the lead jack flashing. Then apply a bead of caulk around the lip of the lead jack. (The caulk will adhere the SquirrelGard™ to the vent in order to prevent 'rattling' during high wind storms and accidental removal by animals.)

5

Slide the SquirrelGard™ over the vent/flashing.




6

Apply spray paint to SquirrelGard™, if not pre-painted.

**You're Done!**

It's as simple as that!



SquirrelGard™ Type	Material	Uses
SquirrelGard™ 2 	26-Gauge Steel with Paint Grip Finish Star Cap & Pipe Pipe fitted with Epoxy/ Rubber Seal for soft sealing connection	Used for covering lead jack flashings with up to a 2 inch diameter
SquirrelGard™ 3 	26-Gauge Steel with Paint Grip Finish Star Cap & Pipe Pipe fitted with Epoxy/ Rubber Seal for soft sealing connection	Used for covering lead jack flashings with up to a 3 inch diameter
SquirrelGard™ 4 	26-Gauge Steel with Paint Grip Finish Star Cap & Pipe Pipe fitted with Epoxy/ Rubber Seal for soft sealing connection	Used for covering lead jack flashings with up to a 4 inch diameter

Custom sizes and material available upon request.



## Why use Lead Jack Flashing?

Lead jack flashing is a premium flashing used to flash plastic/pvc and metal plumbing vent stacks where they extend through the roof decking. The lead jack flashing has a corrugated section in the cylindrical portion that surrounds the plumbing vent to facilitate various roof pitches. The lead material is malleable and can be formed over the top edge of the vent pipe causing a waterproof and long lasting condition. Lead jack flashing provides for clear escape of sewer gases and complete access for plumbing repairs.

Slip-on plastic or galvanized with rubber vent flashings deteriorate due to the ultra-violet rays of the sun. Other vent designs are likely to leak, require specific pitch design and are not easily removed when plumbing repair is necessary without damaging the shingles.

## Things to chew on:

Squirrels teeth grow 6 inches a year so they need things to chew on. Give them flavored wood chews made for rabbits, sterilized bone chews for rabbits, pieces of hard wood, sterilized deer antlers, sterilized cow hoofs, cuttlebone for birds (no need to put it on a holder, they have grape and orange flavors), corn cobs, pumice stone, whole nuts with shells and mineral blocks for small animals and birds. They also like to chew on fruit tree branches, pine tree branches and other branches.